

The North Pennines...

...an Area of Outstanding Natural Beauty

What is an AONB?

- The aim of AONB designation is to look after our finest landscapes not just for now but also for our children's children to cherish and enjoy

There are 40 Areas of Outstanding Natural Beauty (AONBs) in England and Wales, covering 16% of the land area. The North Pennines at almost 2,000 square kilometres is the second largest member of this varied family. These are special places distinguished by the natural beauty of their distinct and nationally important landscapes. In terms of landscape quality, the AONBs are recognised as the equal of our National Parks and are given the same level of protection.

- To find out more about the 40 AONBs visit www.aonb.org.uk

Who looks after the AONB?

Local communities, landowners, farmers and estate managers look after the 'living landscapes' of the North Pennines. These people have helped mould the landscape for centuries and this continues today. Everyone who has an interest in the North Pennines has a responsibility to care for the AONB.

The North Pennines AONB Partnership, an alliance of 22 organisations, helps to look after the AONB. The work of the Partnership is carried out by a small AONB Staff Unit. Guided by the statutory AONB Management Plan, the Staff Unit takes action to conserve and enhance the natural beauty of the area and helps to co-ordinate the work of others.

- Visit www.northpennines.org.uk for more information



The North Pennines AONB Partnership holds a Gold GTBS Award for its corporate offices and tourism activities.

This leaflet is printed on 130gsm Greencoat Plus Velvet paper: 80% recycled post consumer; FSC certification; NAPM recycled certification; 10% TCF virgin fibre; 10% ECF fibre.



Do your bit!

Buy local products -

help safeguard the future of this special place

Fire -

uncontrolled fires can devastate moorland areas. Please don't start fires

Litter -

is unsightly as well as a danger to wildlife – take it home

Safety -

North Pennines' weather can change swiftly, are you fully equipped?

Dogs -

keep dogs under control at all times, especially within sight of livestock

Courtesy -

the North Pennines is a home and work place for many people. Please respect their privacy

Walls & fences -

keep some animals in and others out! Use stiles & gates (and leave them as you find them)



We can provide a summary of the information contained in this publication in large print, different formats and other languages on request. Please call 01388 528801 for details

Produced by the



with the support of



and the area's nine local authorities

All unaccredited images © Natural England/Charlie Hedley



NORTH PENNINES
Area of Outstanding Natural Beauty



The North Pennines

The North Pennines is one of England's most special places – a peaceful, unspoilt landscape with a rich history and vibrant natural beauty.

It was designated as an Area of Outstanding Natural Beauty (AONB) in 1988. Tumbling waterfalls, sweeping moorland vistas, dramatic dales, stone-built villages, snaking stonewalls and friendly faces – the North Pennines has all this and more!

Northern Rocks

The impressive shapes and forms the land takes in the North Pennines, from High Force on the River Tees to the sweeping U-shaped valley of High Cup Gill above Dufton, are the product of millions of years of geological processes. The worldwide significance of the geology found here is recognised by the fact that the North Pennines AONB is Britain's first European Geopark and a founding member of the UNESCO Global Geoparks Network.



© Diane Weston/Raby Estate



© Dermot Blackburn/
Durham County Council

Past Times

About 12,000 people live in the North Pennines today – less than half the number who lived here 140 years ago in the heyday of the lead mining industry. The rise and fall of mining has left an indelible imprint on the landscape, not just in terms of the physical remains but also in the pattern of local settlement. The social history of the miner-farmers is also an intriguing element that contributes to the many chapters in the North Pennines' story.



© Natural England



People and Places

The spectacular character of the North Pennines' landscape is inseparable from the people and places found here. The differing nature of settlements, from the distinctive red sandstone villages at the foot of the North Pennines escarpment to the white farms and barns of the Raby Estate in Teesdale, has a significant impact on landscape character. Local traditions and other intangible elements also come together with wildlife, geology, soils and climate to form the essential essence of the North Pennines landscape. Past, present and future generations of people are also fundamental to an appreciation of the area's rich cultural heritage.



© Lindsay Waddell

Plants and Animals

The area is famous for the variety and profusion of plants and animals found here. Only 20% of the AONB has been agriculturally improved, which means that large tracts of the area are a haven for wildlife.

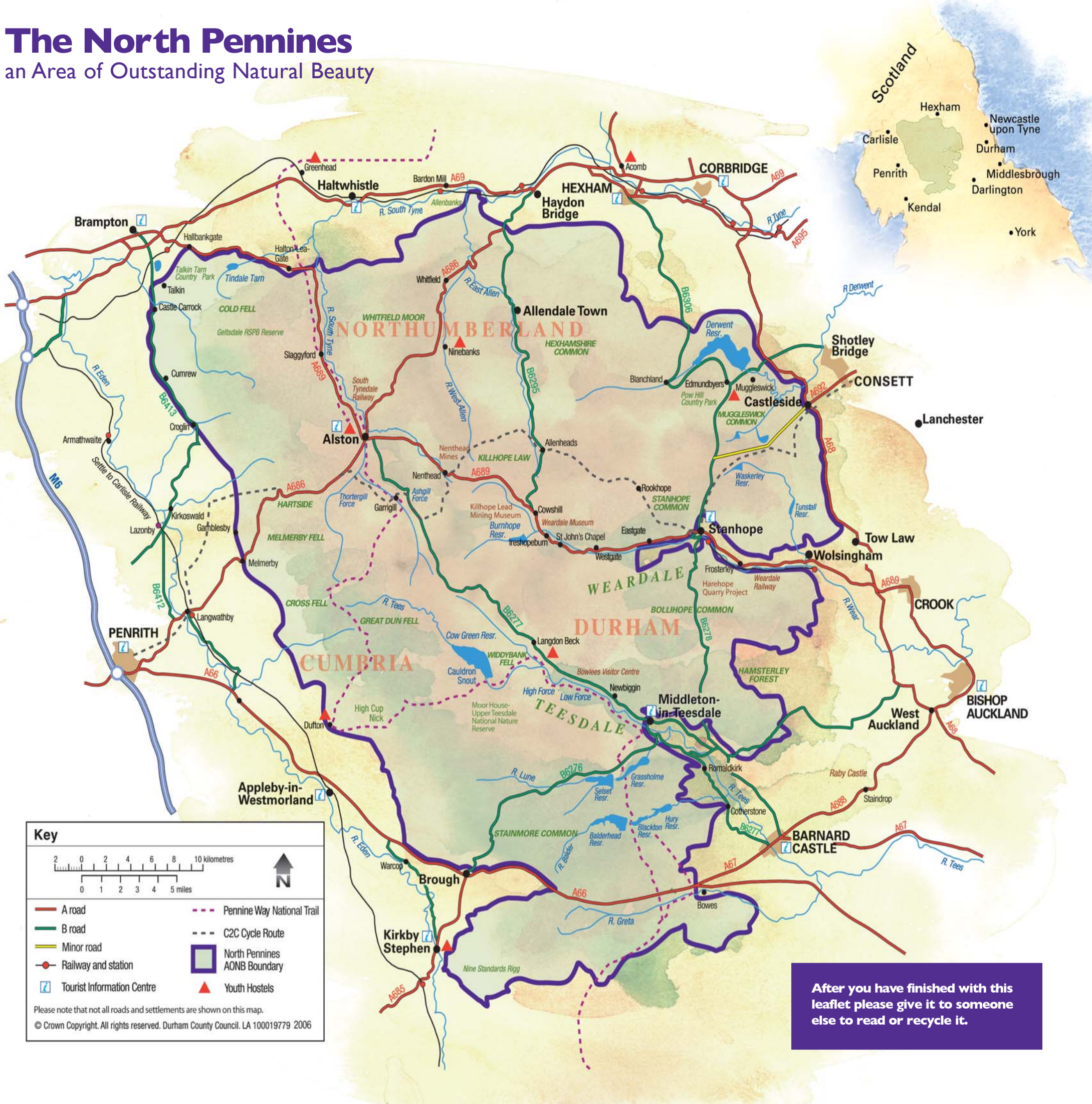
Fact file

In the North Pennines you'll find:

- 40% of the UK's upland hay meadows
- 30% of England's upland heathland and 27% of its blanket bog
- 80% of England's black grouse
- 36% of the AONB designated as Sites of Special Scientific Interest
- Red squirrels, otters and rare arctic alpine plants
- 22,000 pairs of breeding wading birds

The North Pennines

an Area of Outstanding Natural Beauty



After you have finished with this leaflet please give it to someone else to read or recycle it.



© NPAP



© Natural England / Barry Stacey

Tourist Information Centres

Find out about activities and events, places to stay, how to get about and much much more!

You'll find Tourist Information Centres at:

Alston
01434 382244
alston.tic@eden.gov.uk

Appleby
017683 51177
tic@applebytown.org.uk

Brampton
016977 3433
tourism@carlisle.gov.uk

Barnard Castle
01833 690909
tourism@teesdale.gov.uk

Haltwhistle
01434 322002
haltwhistle.tic@btconnect.com

Hexham
01434 652220
hexham.tic@tyndedale.gov.uk

Kirkby Stephen
01768 371199
ks.tic@eden.gov.uk

Middleton-in-Teesdale
01833 641001
tic@middletonplus.myzen.co.uk

Penrith
01768 867466
pen.tic@eden.gov.uk

Stanhope
01388 527650
durham.dales.centre@durham.gov.uk

Public Transport

By using buses you can help look after the AONB. For more information contact:

Traveline
0870 608 2 608
(8am – 8pm)
www.traveline.org.uk

Contact Us

For more information on the AONB or to request a free copy of the annual North Pennines Guide contact us:

North Pennines AONB Partnership
Weardale Business Centre,
The Old Co-op Building, 1 Martin Street, Stanhope,
Co. Durham DL13 2UY
Tel: 01388 528801
Email: info@northpenninesaonb.org.uk
Web: www.northpennines.org.uk